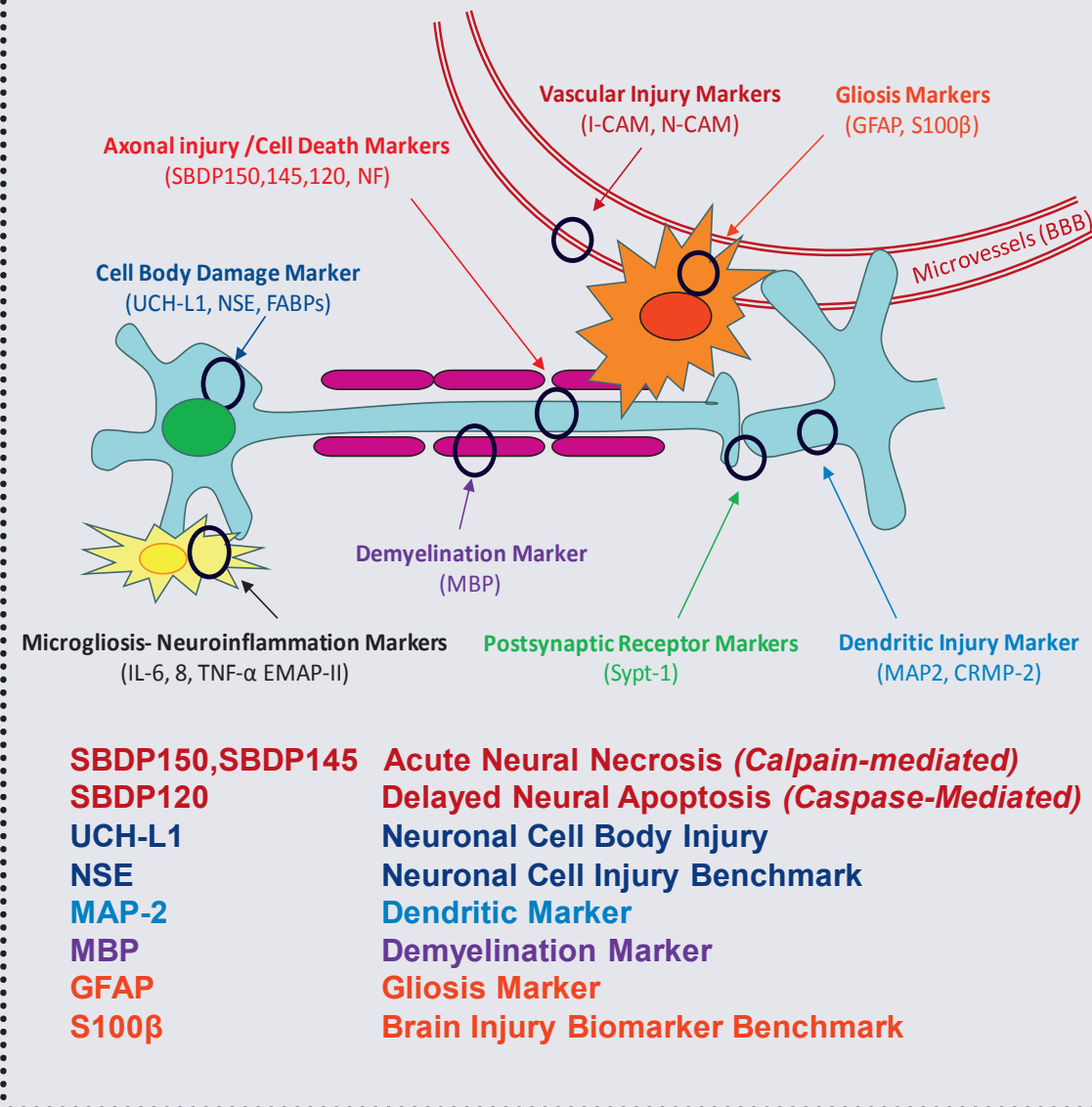


CNS BIOMARKERS

Banyan Biomarkers offers a variety of core biomarkers of



References

1. Brophy, GM et al. J Neurotrauma. 2011 Jun;28(6):861-70
2. Mondello, S. et al. Critical Care. 2011 Jun 24; 15(3):R156.
3. Mondello, S. et al. Expert Rev Mol Diagn. 2011 Jan;11(1):65-78.
4. Mondello, S. et al. J Neurotrauma. 2010 Jul;27(7):1203-13.
5. Svetlov, S.I., et al. (2010) J Trauma. Mar 2, 2010.
6. Liu, MC et al (2010), Eur J Neurosci. 2010 Feb;31(4):722-32.
7. Zhang Z et al. (2009). Apoptosis, 14, 1289-1298.
8. Papa, L., Oli, et al. (2009) Critical Care Medicine Sep 1. 2009.
9. Kobeissy, F., et al. (2008) Expert Review of Proteomics 5(2):293-314.
10. Kobeissy, F.H., et al. (2008) Proteomics - Clinical Applications 2 (10-11): 1467-1483.
11. Pineda, J., Liu, M.C., Aikman, J., Akle, V., Lewis, S., Wang, K.K.W., Robertson, C., Hayes, R.L. (2007). J. Neurotrauma; 24, 354-366.; 24, 354-366.
12. Svetlov, S.I., et al. (2006) Biomarkers, 11: 355-369.
13. Kobeissy, F.H., et al. (2006) Mol. Cell. Proteomics 5, Oct;5(10):1887-1898.
14. Ringger, et al. (2005) J. Neurotrauma 21, 1443-1456.
15. Ringger, N.C., et al. (2004) J. Neurotrauma, 21, 829-841.



13400 Progress Blvd
 Alachua, FL 32615
 Tel 386.518.6815
 Fax 386.418.2184
 services@banyanbio.com



Innovating diagnostics for the detection of CNS injury and disease

386.518.6815 • services@banyanbio.com



Research tools for critical unmet medical needs

ABOUT BANYAN BIOMARKERS

Banyan Biomarkers, Inc., has developed sandwich-ELISA assays in cerebrospinal fluid (CSF), plasma, and serum for various neurological, neurodegenerative and neuropsychiatric diseases and offers these analytical services in pre- and clinical samples to a wide range of customers, including pharmaceutical and biotechnology companies, CROs, hospitals and health networks and academic institutions.

THERAPEUTIC AREAS OF RESEARCH

- Neurotoxicity / Neuroinjury
- Traumatic Brain Injury
- Stroke
- Neurodegenerative Diseases
- Neurological Disorders
- Psychiatric Disorders
- Neuroinflammation
- Apoptosis
- Necrosis
- Liver Injury / Hepatotoxicity



13400 Progress Blvd, Alachua, FL 32615 • services@banyanbio.com • Tel 386.518.6815 • Fax 386.418.2184

The Banyan Biomarker assays are for investigational and research use only and are not intended for clinical diagnostic purposes.

Creating breakthroughs for the research of Neurological Disorders...

SELECTED BIOMARKERS

UCH-L1 (Ubiquitin C-terminal hydrolase - L1)
Cell body injury, ubiquitin-proteasome pathway

GFAP (Glial Fibrillary Acidic Protein)
Astrogliosis

MBP (Myelin Basic Protein)

SBDP-145/150 (α II-Spectrin Breakdown Product Pairs)
Neurodegeneration (necrosis), calpain-activation

SBDP-120 (Spectrin Breakdown Product Pairs)
Apoptosis, caspase-activation

MAP-2 (Microtubule Associated Proteins - 2)
Dendritic integrity and transport

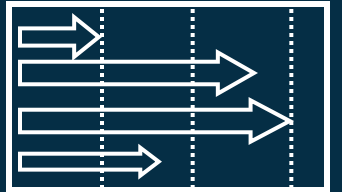
S100 β
Brain injury, blood-brain barrier marker

*Additional biomarkers are available, please contact us for a detailed list of biomarkers.

STRATEGIC BENEFITS

- Demonstrating proof-of principal target inhibition in animal models
- Optimizing dose regimens to obtain maximum target inhibition
- Providing critical 'go-no-go' decisions
- Enhancing drug development from phase 1—phase III clinical trials
- Drug safety and efficacy assessment (PK/PD)
- Customized biomarker panels for patient stratification, mechanistic studies and outcome prediction
- Multiplexed biomarker panels under development

The Banyan Biomarker assays are for investigational and research use only and are not intended for clinical diagnostic purposes.



IMPROVE EFFICIENCY

Managing a research pipeline is a constant negotiation between time, money, and resources. Let Banyan Biomarkers improve the efficiency of your clinical program by optimally selecting lead compounds for your laboratory.



IN-HOUSE EXPERTISE

Banyan Biomarkers not only is developing proprietary biomarkers specifically for neurological diseases but also animal models for Traumatic Brain Injury and Stroke. These models are located in-house at our research laboratories in Alachua, Florida.



COLLABORATION

Banyan Biomarkers has a wide range of partners including pharmaceutical, biotechnology, and academic laboratories. We have an active biomarker pipeline to collaborate and create an assay development program specific to your strategic initiatives.